

EX. 8 C^MA^S C[#]M^AS D^MA^S E^bM^AS E^MA^S F^MA^S F[#]M^AS G^MA^S



A^bM^AS A^MA^S B^bM^AS B^MA^S C^MA^S C^MA^S B^MA^S



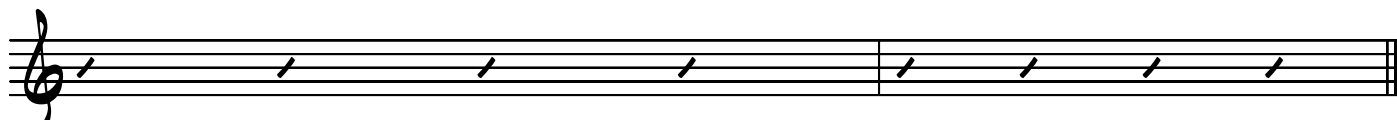
5

B^bM^AS A^MA^S A^bM^AS G^MA^S G^bM^AS F^MA^S E^MA^S E^bM^AS



9

D^MA^S D^bM^AS C^MA^S



13